



LITERACY ASSESSMENTS

Evelyn Lucero, Literacy & Social Studies Coach

Dec. 5, 2019





$\sqrt{123}$



STAGES of DEVELOPMENT!

+ x ÷



THREE MAIN LITERACY ASSESSMENTS

Beginning & End of Year



**Fountas & Pinnell
(F&P)**

Reading Levels A-Z

READING



**Developmental
Spelling Analysis
(DSA)**

5 Stages of Spelling

SPELLING



**Writing On-Demand
Narrative Writing**

WRITING

WRITING STAGES

- Early Emergent
- Emergent
- Transitional
- Fluent



m o a m b d c z o b o b
o m m m e s c o z m
m

I w l b hope wen skul iz t

Once upon a time a dog named Rags got lost in the woods. All of the people looked for him. After a while he found his way home again. His family was very happy.



SPELLING STAGES

- Emergent Spelling
- Letter Name
- Within Word Pattern
- Syllable Juncture
- Derivational Constancy

CHAPERON
ACR

mine: M MN Min

send: S SD SAD SED

drive: .I .IV .IRF DRIV

seat: SEET SETE nail: NALE

boat: BOTE rope: ROAP

lau confusion: CONFUSSHUN

cré barber: BARBAR

pleasure: PL ESUDE

opposition: OPPISITION

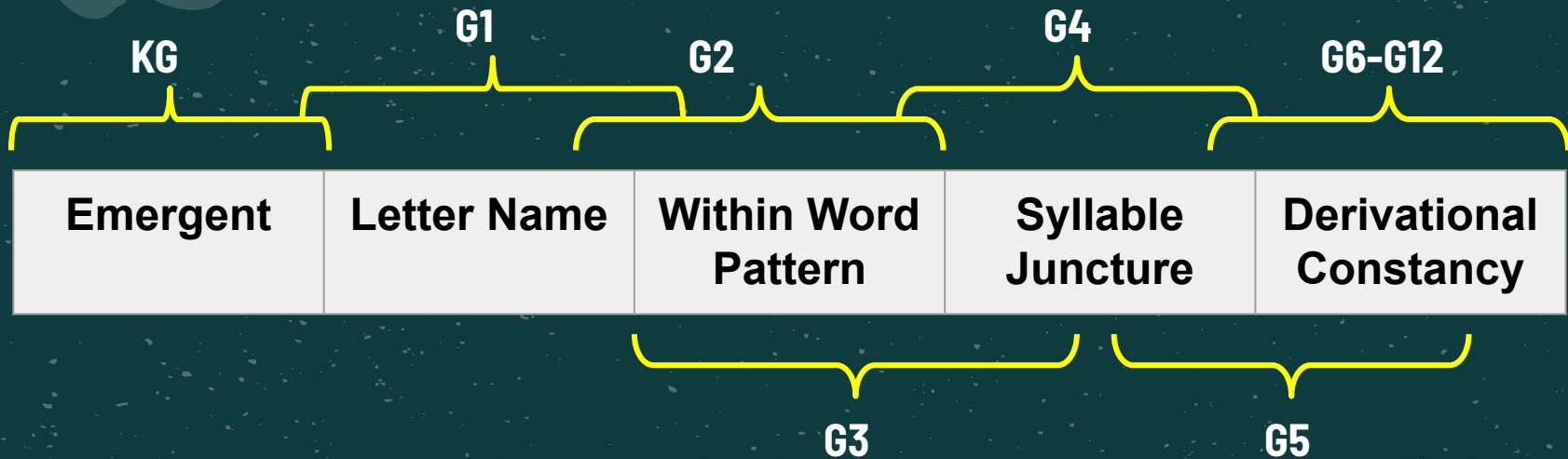
criticize: CRITASIZE

benefit: BENAFIT

amusement: AMMUSEMENT



SPELLING STAGES



READING LEVELS

- **Guided Reading Levels A-Z**
 - **Genre**
 - **Text Structure**
 - **Content**
 - **Themes and Ideas**
 - **Language and Literary Features**



READING LEVELS

- **Guided Reading Levels A-Z**
 - **Sentence Complexity**
 - **Vocabulary**
 - **Word Count**
 - **Illustrations**
 - **Book and Print Features**



READING LEVELS





OK, so now what?!

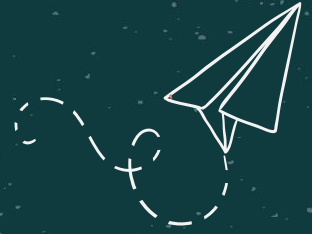


01

CONVERSATIONS
with KIDS

02

CONTINUE to
READ for
INTEREST



03

CONTINUE to
WRITE for
INTEREST



04

ASK LOTS of
QUESTIONS



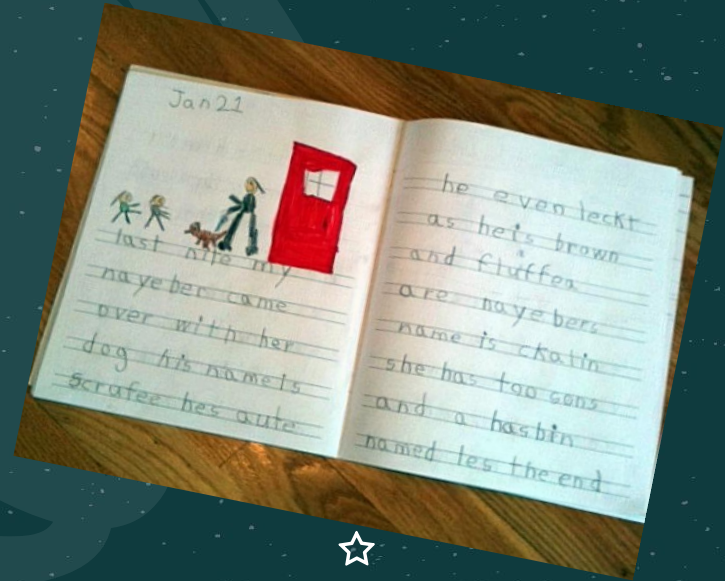


CONVERSATIONS with KIDS



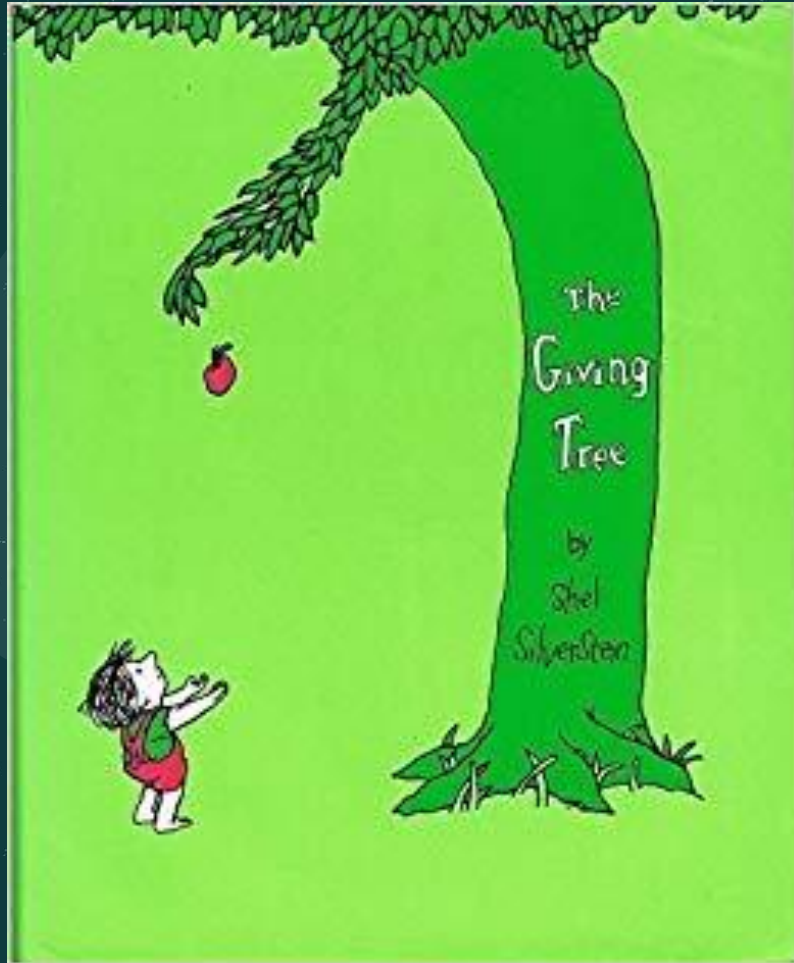
★ READING is like breathing in &
★ WRITING is like breathing out ★

★ Pam Allyn ★





QUESTIONS for
KIDS



$\sqrt{123}$



THANKS!

Do you have any questions?

elucero@ssis.edu.vn

CREDITS: This presentation template was created by **Slidesgo**, including icons by **Flaticon**, and infographics & images by Freepik.

Please keep this slide for attribution.

